

Ordre

Famille

*Nom scientifique*

Grotte

Taille

Déterminateur

# Faune cavernicole du Khammouane (LAOS)

24 février au 08 mars 2019

C  
L  
A  
S  
S  
E

(déterminations au 04/02/23)

Photo : Jean-Michel Ostermann



Fédération Française  
de Spéléologie



Hirudinea

sp1

Tham Mi Hang (Laos)

1 cm

C  
L  
I  
T  
E  
L  
L  
A  
T  
A



19122

Josiane Lips



Stylommatophora

Cyclophoridae

*sp1*

Tham Done (Laos)

30 mm

G  
A  
S  
T  
R  
O  
P  
O  
D  
A



19103\*

Josiane Lips



Pulmonata

Subulinidae

*sp2*

Tham Hoi (Laos)

8 mm

G  
A  
S  
T  
R  
O  
P  
O  
D  
A

19353

Josiane Lips





Stylommatophora

Cyclophoridae

*sp3*

Tham Kway (Laos)

25 mm

G  
A  
S  
T  
R  
O  
P  
O  
D  
A



19158\*



Josiane Lips



Stylommatophora

sp4

Tham Kway (Laos)

25 mm

G  
A  
S  
T  
R  
O  
P  
O  
D  
A



19172\*

Josiane Lips



Stylommatophora

*sp4*

Tham Khiewkoud (Laos)

25 mm

G  
A  
S  
T  
R  
O  
P  
O  
D  
A



19215\*

Josiane Lips



Stylommatophora

sp5

Tham Kway (Laos)

5 cm

G  
A  
S  
T  
R  
O  
P  
O  
D  
A



19177\*

Josiane Lips

Stylommatophora

Cyclophoridae

sp6

Tham Kway (Laos)

1 cm

G  
A  
S  
T  
R  
O  
P  
O  
D  
A



19178

Josiane Lips



Stylommatophora

sp7

Tham Hoi (Laos)

4 cm

G  
A  
S  
T  
R  
O  
P  
O  
D  
A



19325\*

Josiane Lips

Stylommatophora

sp8

Tham Hoi (Laos)

4,5 cm

G  
A  
S  
T  
R  
O  
P  
O  
D  
A



19330\*



Josiane Lips



Stylommatophora

Cyclophoridae

*sp9*

Tham Hoi (Laos)

3 cm

G  
A  
S  
T  
R  
O  
P  
O  
D  
A



19344\*

Josiane Lips



Stylommatophora

*sp10*

Tham Hoi (Laos)

3 cm

G  
A  
S  
T  
R  
O  
P  
O  
D  
A



19345\*



Josiane Lips



Decapoda

Palaemonidae

*Macrobrachium sp1*

Tham Done (Laos)

1,5 cm

M  
A  
L  
O  
C  
O  
S  
T  
R  
A  
C  
A



19104

Josiane Lips

Decapoda

Brachiuridae

sp1

Tham Done (Laos)

1,5 cm

M  
A  
L  
O  
C  
O  
S  
T  
R  
A  
C  
A

19046

Josiane Lips





Isopoda

Armadillidiidae

*sp1*

Tham Kway (Laos)

8 mm

M  
A  
L  
O  
C  
O  
S  
T  
R  
A  
C  
A



19153



Josiane Lips



Isopoda

Armadillidiidae

*sp2*

Tham En (Laos)

4 mm

M  
A  
L  
O  
C  
O  
S  
T  
R  
A  
C  
A



19318

Josiane Lips

Isopoda

Armadillidiidae

*sp2*

Tham Hoi (Laos)

3 mm

M  
A  
L  
O  
C  
O  
S  
T  
R  
A  
C  
A



19356

1.0 mm



1.0 mm



Isopoda

Armadillidiidae

*sp3*

Tham Khong (Laos)

1,2 cm

M  
A  
L  
O  
C  
O  
S  
T  
R  
A  
C  
A



19235

Josiane Lips



Isopoda

Armadillidiidae

*sp3*

Tham Khong (Laos)

1,2 cm

M  
A  
L  
O  
C  
O  
S  
T  
R  
A  
C  
A



19250

Josiane Lips



Isopoda

Armadillidiidae

*sp4*

Tham Saphong (Laos)

1 cm

M  
A  
L  
O  
C  
O  
S  
T  
R  
A  
C  
A



19056

Josiane Lips



Pseudoscorpiones

Chthoniidae

*sp1*

Tham Saphong (Laos)

2 mm

A  
R  
A  
C  
H  
N  
I  
D  
A



19073

Josiane Lips



Pseudoscorpiones

Cheiridiidae

*sp2*

Tham Khong (Laos)

5 mm

A  
R  
A  
C  
H  
N  
I  
D  
A



19253

Josiane Lips



Pseudoscorpiones

Cheiridiidae

*sp2*

Tham Khong (Laos)

4 mm

A  
R  
A  
C  
H  
N  
I  
D  
A



19249

1.0 mm

Josiane Lips



Scorpiones

Tham Kway (Laos)

3 cm

*sp1*

A  
R  
A  
C  
H  
N  
I  
D  
A



19185

Alexis Augustin



Opiliones

Sclerosomatidae

*sp1*

Tham Done (Laos)

1 cm

A  
R  
A  
C  
H  
N  
I  
D  
A



19018

Josiane Lips



Opiliones

*sp2*

Tham Done (Laos)

4 mm

A  
R  
A  
C  
H  
N  
I  
D  
A



19169

Josiane Lips



Opiliones

*sp2*

Tham Khiewkoud (Laos)

4 mm

A  
R  
A  
C  
H  
N  
I  
D  
A



19212

Josiane Lips



Opiliones (Laniatores)

*sp3*

Tham Done (Laos)

7 mm

A  
R  
A  
C  
H  
N  
I  
D  
A



19147

Josiane Lips



Opiliones (Laniatores)

Tham Done (Laos)

7 mm

*sp4*

A  
R  
A  
C  
H  
N  
I  
D  
A

19174

Josiane Lips





Opiliones

Tham Kway (Laos)

4 mm

*sp5*

A  
R  
A  
C  
H  
N  
I  
D  
A



19184

Bernard Lips



Opiliones

Tham Khiewkoud (Laos)

3 mm

*sp6*

A  
R  
A  
C  
H  
N  
I  
D  
A

19211

Bernard Lips





Opiliones (Laniatores)

Tham Khong (Laos)

*sp7*

5 mm

A  
R  
A  
C  
H  
N  
I  
D  
A

19237

Josiane Lips





Opiliones

*sp8*

Tham Hoi (Laos)

3 mm

A  
R  
A  
C  
H  
N  
I  
D  
A



19327

Josiane Lips



Opiliones

Tham Khong (Laos)

4 mm

*sp9*

A  
R  
A  
C  
H  
N  
I  
D  
A

19283

Josiane Lips





Oribatida (Acari)

*sp1*

Tham Hoi (Laos)

0,5 mm

A  
R  
A  
C  
H  
N  
I  
D  
A



19370

0.5 mm

Josiane Lips



Oribatida (Acari)

*sp2*

Tham Done (Laos)

0,5 mm

A  
R  
A  
C  
H  
N  
I  
D  
A

19416

0.5 mm

Josiane Lips





Oribatida (Acari)

*sp3*

Tham Khong (Laos)

0,5 mm

A  
R  
A  
C  
H  
N  
I  
D  
A

19409

0.5 mm

Josiane Lips





Oribatida (Acari)

*sp4*

Tham Khong (Laos)

0,5 mm

A  
R  
A  
C  
H  
N  
I  
D  
A



19409

0.5 mm

Josiane Lips



Mesostigmata (Acari)

*sp5*

Tham Mi Hang (Laos)

0,8 mm

A  
R  
A  
C  
H  
N  
I  
D  
A



19426

0.5 mm



0.5 mm

Josiane Lips



Mesostigmata (Acari)

Uropodidae

*sp6*

Tham Khong (Laos)

0,6 mm

A  
R  
A  
C  
H  
N  
I  
D  
A



19409

0.5 mm

Josiane Lips



Araneae

Agelenidae

*sp1*

Tham Hoi (Laos)

8 mm

A  
R  
A  
C  
H  
N  
I  
D  
A



19342



1.0 mm

Josiane Lips



Araneae

Agelenidae

sp2

Tham Khong (Laos)

2 mm

A  
R  
A  
C  
H  
N  
I  
D  
A



19258

Josiane Lips



Araneae

Agelenidae

*sp3*

Tham Hoi (Laos)

1,5 cm

A  
R  
A  
C  
H  
N  
I  
D  
A



19347

Josiane Lips



Araneae

Agelenidae

*sp4*

Tham Khong (Laos)

4 mm

A  
R  
A  
C  
H  
N  
I  
D  
A

19399

0.5 mm

Josiane Lips





Araneae

Leptonetidae

*sp1*

Tham Done (Laos)

2 mm

A  
R  
A  
C  
H  
N  
I  
D  
A



19043

Josiane Lips



Araneae

Pholcidae

*sp1*

Tham Kway (Laos)

7 mm

A  
R  
A  
C  
H  
N  
I  
D  
A



19156

Josiane Lips



Araneae

Pholcidae

*sp1*

Tham Kway (Laos)

7 mm

A  
R  
A  
C  
H  
N  
I  
D  
A



19157

Josiane Lips



Araneae

Pholcidae

*sp1*

Tham Kway (Laos)

4 mm

A  
R  
A  
C  
H  
N  
I  
D  
A



19173

Josiane Lips



Araneae

Pholcidae

*Khorata khammouan*

Tham En (Laos)

4 mm

Josiane Lips

A  
R  
A  
C  
H  
N  
I  
D  
A



Josiane Lips



19301



Araneae

Pholcidae

*sp3*

Tham Khong (Laos)

6 mm

A  
R  
A  
C  
H  
N  
I  
D  
A



19275\*

Josiane Lips



Araneae

Salticidae

*sp1*

Tham Khong (Laos)

6 mm

A  
R  
A  
C  
H  
N  
I  
D  
A



19274

Josiane Lips



Araneae

Salticidae

*sp1*

Tham Khong (Laos)

6 mm

A  
R  
A  
C  
H  
N  
I  
D  
A



19388

1.0 mm

Josiane Lips



Araneae

Salticidae

*sp2*

Tham Khong (Laos)

4 mm

A  
R  
A  
C  
H  
N  
I  
D  
A

19285\*

Josiane Lips





Araneae

Scytodidae

*sp1*

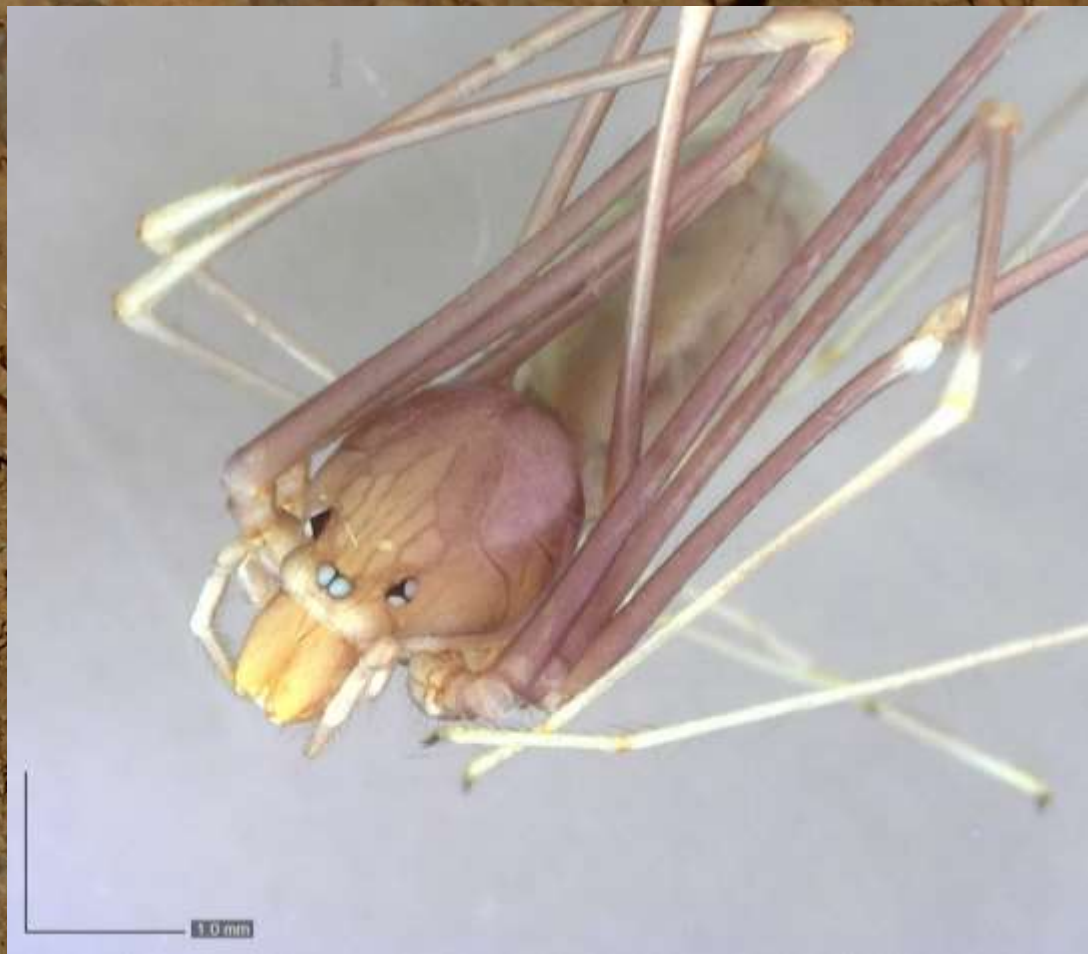
Tham Hoi (Laos)

6 mm

A  
R  
A  
C  
H  
N  
I  
D  
A



19331





Araneae

Sparassidae

*Heteropoda maxima*

Tham Done (Laos)

3 cm

Josiane Lips

A  
R  
A  
C  
H  
N  
I  
D  
A



19091

Josiane Lips



Araneae

Sparassidae

*Heteropoda steineri*

Tham Done (Laos)

2 cm

Josiane Lips

A  
R  
A  
C  
H  
N  
I  
D  
A



19047

19148

Josiane Lips



Araneae

Sparassidae

*Heteropoda steineri*

Tham Done (Laos)

4 mm

Josiane Lips

A  
R  
A  
C  
H  
N  
I  
D  
A



19437

1.0 mm

Josiane Lips



Araneae

Theridiidae

*sp1*

Tham Done (Laos)

2 mm

A  
R  
A  
C  
H  
N  
I  
D  
A



19091



Josiane Lips



Araneae

Theridiidae

*sp1*

Tham Saphong (Laos)

2 mm

A  
R  
A  
C  
H  
N  
I  
D  
A



19051

1.0 mm



1.0 mm

Josiane Lips



Araneae

Theridiidae

sp2

Tham Khong (Laos)

5 mm



A  
R  
A  
C  
H  
N  
I  
D  
A

19229

Josiane Lips



Araneae

Uloboridae

*sp1*

Tham Kway (Laos)

6 mm

A  
R  
A  
C  
H  
N  
I  
D  
A



19141



Josiane Lips



Araneae

*sp1*

Tham Saphong (Laos)

1,5 mm

A  
R  
A  
C  
H  
N  
I  
D  
A



0.5 mm

19323

0.5 mm

Josiane Lips



Araneae

*sp2*

Tham Khong (Laos)

2 mm

A  
R  
A  
C  
H  
N  
I  
D  
A



19300

Josiane Lips



Araneae

sp3

Tham Hoi (Laos)

3 mm

A  
R  
A  
C  
H  
N  
I  
D  
A



19324



Josiane Lips



Araneae

sp4

Tham Hoi (Laos)

4 mm

A  
R  
A  
C  
H  
N  
I  
D  
A



19368

0.5 mm

Josiane Lips



Araneae

*sp5*

Tham Hoi (Laos)

1 cm

A  
R  
A  
C  
H  
N  
I  
D  
A



19348

Josiane Lips



Araneae

sp6

Tham Hoi (Laos)

0,5 mm

A  
R  
A  
C  
H  
N  
I  
D  
A



19355

Josiane Lips

Araneae

*sp7*

Tham Hoi (Laos)

4 mm

A  
R  
A  
C  
H  
N  
I  
D  
A

19349\*

Josiane Lips





Araneae

Tham Kway (Laos)

6 mm

*sp8*

A  
R  
A  
C  
H  
N  
I  
D  
A



19178\*

Bernard Lips

Araneae

Tham Kway (Laos)

*sp9*

A  
R  
A  
C  
H  
N  
I  
D  
A



19960

Jean-Michel Ostermann



Spirostreptida

Cambalopsidae

*sp1*

Tham Done (Laos)

2 cm

D  
I  
P  
L  
O  
P  
O  
D  
A



19106

Josiane Lips



Spirostreptida

Cambalopsidae

sp2

Tham Done (Laos)

3 cm

D  
I  
P  
L  
O  
P  
O  
D  
A



19155

Josiane Lips



Spirostreptida

Cambalopsidae

sp3

Tham Khong (Laos)

3 cm

D  
I  
P  
L  
O  
P  
O  
D  
A



19243

Josiane Lips



Polydesmida

sp4

Tham Kway (Laos)

3 cm

D  
I  
P  
L  
O  
P  
O  
D  
A



19183

Bernard Lips



Polydesmida

sp5

Tham En (Laos)

2 cm

D  
I  
P  
L  
O  
P  
O  
D  
A



19317

Josiane Lips



Glomerida

*sp6*

Tham Khong (Laos)

3 mm

D  
I  
P  
L  
O  
P  
O  
D  
A



19262

Josiane Lips



Glomerida

Tham Khong (Laos)

3 mm

*sp6*

D  
I  
P  
L  
O  
P  
O  
D  
A



19397

1.0 mm

Josiane Lips

Polydesmida

sp7

Tham Kway (Laos)

3 cm

D  
I  
P  
L  
O  
P  
O  
D  
A



19130



Josiane Lips



Callipodida

Callipodidae

*sp8*

Tham Done (Laos)

7 cm

D  
I  
P  
L  
O  
P  
O  
D  
A



19162

Bernard Lips



Scutigeroforma

Scutigeridae

*Thereuopoda longicornis*

Tham Pha Taek (Laos)

7 cm

Josiane Lips

C  
H  
I  
L  
O  
P  
O  
D  
A



19119\*

Bernard Lips



Entomobryomorpha

Entomobryidae

*sp1*

Tham Done (Laos)

2 mm

C  
O  
L  
L  
E  
M  
B  
O  
L  
A



19102

Josiane Lips

Entomobryomorpha

Entomobryidae

*sp2*

Tham Mi Hang (Laos)

1,5 mm

C  
O  
L  
L  
E  
M  
B  
O  
L  
A



19125

0.5 mm

Josiane Lips



Entomobryomorpha

Tomoceridae

*sp3*

Tham Mi Hang(Laos)

3 mm

C  
O  
L  
L  
E  
M  
B  
O  
L  
A

19170\*

Josiane Lips





Entomobryomorpha

Paronellidae

*Dicranocentroides*

Tham Mi Hang (Laos)

4 mm

Louis Deharveng

C  
O  
L  
L  
E  
M  
B  
O  
L  
A



19369

Bernard Lips



Zygentoma ?

Tham Saphong (Laos)

5 mm

*sp1*

H  
E  
X  
A  
P  
O  
D  
A  
-  
I  
N  
S  
E  
C  
T  
A



19052

Bernard Lips



Zygentoma ?

Tham Saphong (Laos)

12 mm

*sp2*

H  
E  
X  
A  
P  
O  
D  
A  
-  
I  
N  
S  
E  
C  
T  
A

19076

Josiane Lips





Psocodea

*sp1*

Tham En (Laos)

2 mm

H  
E  
X  
A  
P  
O  
D  
A  
-  
I  
N  
S  
E  
C  
T  
A



19379

0.5 mm

Josiane Lips

Psocodea

Tham Done (Laos)

2 mm

*sp2*

H  
E  
X  
A  
P  
O  
D  
A  
-  
I  
N  
S  
E  
C  
T  
A



19414

0.5 mm

Josiane Lips



Coleoptera

Aderidae

*Zarcosia sp1.*

Tham Done (Laos)

4 mm

Josiane Lips

H  
E  
X  
A  
P  
O  
D  
A  
-  
I  
N  
S  
E  
C  
T  
A



19110

Josiane Lips

Coleoptera

Aderidae

*Zarcosia sp1.*

Tham Khong (Laos)

4 mm

Josiane Lips

H  
E  
X  
A  
P  
O  
D  
A  
-  
I  
N  
S  
E  
C  
T  
A



19396

1.0 mm

Bernard Lips



Coleoptera

Anthricidae

*Anthelephila sp1*

Tham Saphong (Laos)

8 mm

Josiane Lips

H  
E  
X  
A  
P  
O  
D  
A  
-  
I  
N  
S  
E  
C  
T  
A

19042\*

Josiane Lips



Coleoptera

Bostrichidae

*sp1*

Tham Khong (Laos)

2 mm

H  
E  
X  
A  
P  
O  
D  
A  
-  
I  
N  
S  
E  
C  
T  
A



19400

0.5 mm

Bernard Lips



Coleoptera

Carabidae

*Lanxangaphaenops augustini*

Tham Kway (Laos)

6 mm

Bernard Lips

Nouvelle espèce

H  
E  
X  
A  
P  
O  
D  
A  
-  
I  
N  
S  
E  
C  
T  
A

19128

Bernard Lips





Coleoptera

Carabidae

*Lanxangaphaenops louisi*

Tham Kway (Laos)

4 mm

Thierry Deuve

H  
E  
X  
A  
P  
O  
D  
A  
-  
I  
N  
S  
E  
C  
T  
A



19058

Bernard Lips



Coleoptera

Carabidae

*Lanxangaphaenops louisi*

Tham En (Laos)

9 mm

Thierry Deuve

H  
E  
X  
A  
P  
O  
D  
A  
-  
I  
N  
S  
E  
C  
T  
A



19313

Bernard Lips

Coleoptera

Carabidae

*Lanxangaphaenops louisi*

Tham Saphong (Laos)

7 mm

Thierry Deuve

H  
E  
X  
A  
P  
O  
D  
A  
-  
I  
N  
S  
E  
C  
T  
A



19476

1.0 mm

Bernard Lips



Coleoptera

Carabidae

*sp2*

Tham Mi Hang (Laos)

7 mm

H  
E  
X  
A  
P  
O  
D  
A  
-  
I  
N  
S  
E  
C  
T  
A



19124

Bernard Lips



Coleoptera

Carabidae

*sp2*

Tham Mi Hang (Laos)

8 mm

H  
E  
X  
A  
P  
O  
D  
A  
-  
I  
N  
S  
E  
C  
T  
A



19523

1.0 mm

Bernard Lips



Coleoptera

Carabidae

*sp3*

Tham Saphong (Laos)

4 mm

H  
E  
X  
A  
P  
O  
D  
A  
-  
I  
N  
S  
E  
C  
T  
A



19027

Josiane Lips

Coleoptera

Carabidae

*sp3*

Tham Mi Hang (Laos)

4 mm

H  
E  
X  
A  
P  
O  
D  
A  
-  
I  
N  
S  
E  
C  
T  
A



19524

0.5 mm

Josiane Lips



Coleoptera

Carabidae

sp4

Tham Saphong (Laos)

4 mm

H  
E  
X  
A  
P  
O  
D  
A  
-  
I  
N  
S  
E  
C  
T  
A



19480

1.0 mm

Josiane Lips

Coleoptera

Carabidae

*sp5*

Tham Saphong (Laos)

8 mm

H  
E  
X  
A  
P  
O  
D  
A  
-  
I  
N  
S  
E  
C  
T  
A



19057

Josiane Lips



Coleoptera

Carabidae

*sp5*

Tham Saphong (Laos)

8 mm

H  
E  
X  
A  
P  
O  
D  
A  
-  
I  
N  
S  
E  
C  
T  
A



19471

1.0 mm

Bernard Lips

Coleoptera

Carabidae

*sp6*

Tham Khiewkoud (Laos)

9 mm

H  
E  
X  
A  
P  
O  
D  
A  
-  
I  
N  
S  
E  
C  
T  
A



19204

Josiane Lips



Coleoptera

Carabidae

sp7

Tham Khong (Laos)

6 mm

H  
E  
X  
A  
P  
O  
D  
A  
-  
I  
N  
S  
E  
C  
T  
A



19395

2.0 mm

Bernard Lips

Coleoptera

Chrysomelidae

*sp1*

Tham Khong (Laos)

4 mm

Josiane Lips

H  
E  
X  
A  
P  
O  
D  
A  
-  
I  
N  
S  
E  
C  
T  
A

2.0 mm



19271



Josiane Lips



Coleoptera

Chrysomelidae

*sp2*

Tham Khong (Laos)

5 mm

Josiane Lips

H  
E  
X  
A  
P  
O  
D  
A  
-  
I  
N  
S  
E  
C  
T  
A



19287



Josiane Lips

Coleoptera

Chrysomelidae

*sp3*

Tham Kway (Laos)

5 mm

Josiane Lips

H  
E  
X  
A  
P  
O  
D  
A  
-  
I  
N  
S  
E  
C  
T  
A



19434

2.0 mm

Bernard Lips



Coleoptera

Chrysomelidae

*sp4*

Tham Khong (Laos)

5 mm

H  
E  
X  
A  
P  
O  
D  
A  
-  
I  
N  
S  
E  
C  
T  
A



19271

2.0 mm

Bernard Lips

Coleoptera

Chrysomelidae

*sp5*

Tham Khong (Laos)

5 mm

H  
E  
X  
A  
P  
O  
D  
A  
-  
I  
N  
S  
E  
C  
T  
A



19271

Bernard Lips



Coleoptera

Dermestidae

*Katkaenus spectaculus*

Xe Bang Fai (Laos)

4 mm

Andreas Herrmann

H  
E  
X  
A  
P  
O  
D  
A  
-  
I  
N  
S  
E  
C  
T  
A



19358

1.0 mm

Bernard Lips

Coleoptera

Elateridae

*sp1*

Tham Khong (Laos)

7 mm

H  
E  
X  
A  
P  
O  
D  
A  
-  
I  
N  
S  
E  
C  
T  
A



19294

1.0 mm

Bernard Lips



Coleoptera

Histeridae

*sp1*

Tham Khong (Laos)

4 mm

H  
E  
X  
A  
P  
O  
D  
A  
-  
I  
N  
S  
E  
C  
T  
A



19407

0.5 mm

Bernard Lips

Coleoptera

Histeridae

*sp2*

Tham Saphong (Laos)

3 mm

H  
E  
X  
A  
P  
O  
D  
A  
-  
I  
N  
S  
E  
C  
T  
A



19472

0.5 mm

Bernard Lips



Coleoptera

Leiodidae

*Ptomaphagus lipsae*

Tham Done (Laos)

1 mm

Jean-Michel Lemaire

H  
E  
X  
A  
P  
O  
D  
A  
-  
I  
N  
S  
E  
C  
T  
A



19094

Josiane Lips

Coleoptera

Leiodidae

*Ptomaphagus lipsae*

Tham Saphong (Laos)

1,5 mm

Jean-Michel Lemaire

H  
E  
X  
A  
P  
O  
D  
A  
-  
I  
N  
S  
E  
C  
T  
A



19483

0.5 mm

Bernard Lips



Coleoptera

Leiodidae

*sp2*

Tham Kway (Laos)

2 mm

H  
E  
X  
A  
P  
O  
D  
A  
-  
I  
N  
S  
E  
C  
T  
A



19071

Josiane Lips

Coleoptera

Leiodidae

*sp2*

Tham Saphong (Laos)

2 mm

H  
E  
X  
A  
P  
O  
D  
A  
-  
I  
N  
S  
E  
C  
T  
A



19473

0.5 mm

Bernard Lips



Coleoptera

Oedemeridae

*sp1*

Tham Khong (Laos)

1,5 cm

H  
E  
X  
A  
P  
O  
D  
A  
-  
I  
N  
S  
E  
C  
T  
A



19265

Josiane Lips

Coleoptera

Oedemeridae

*sp1*

Tham Khong (Laos)

1,5 cm

H  
E  
X  
A  
P  
O  
D  
A  
-  
I  
N  
S  
E  
C  
T  
A



19265

2.0 mm

Bernard Lips



Coleoptera

Scarabaeidae

*sp1*

Tham Mi Hang(Laos)

1 cm

H  
E  
X  
A  
P  
O  
D  
A  
-  
I  
N  
S  
E  
C  
T  
A



19123

Bernard Lips



Coleoptera

Staphylinidae

*Stenus sp1*

Tham Done (Laos)

8 mm

H  
E  
X  
A  
P  
O  
D  
A  
-  
I  
N  
S  
E  
C  
T  
A



19088

Josiane Lips



Coleoptera

Staphylinidae

*Stenus sp1*

Tham Done (Laos)

8 mm

H  
E  
X  
A  
P  
O  
D  
A  
-  
I  
N  
S  
E  
C  
T  
A



19115

1.0 mm

Josiane Lips

Coleoptera

Staphylinidae

*sp2*

Tham Kway (Laos)

5 mm

Scaphidiinae

H  
E  
X  
A  
P  
O  
D  
A  
-  
I  
N  
S  
E  
C  
T  
A



19167

Josiane Lips



Coleoptera

Staphylinidae

*sp2*

Tham Kway (Laos)

5 mm

H  
E  
X  
A  
P  
O  
D  
A  
-  
I  
N  
S  
E  
C  
T  
A



19167

1.0 mm

Bernard Lips

Coleoptera

Staphylinidae

*sp3*

Tham Kway (Laos)

1 cm

H  
E  
X  
A  
P  
O  
D  
A  
-  
I  
N  
S  
E  
C  
T  
A



19063

Josiane Lips



Coleoptera

Staphylinidae

*sp3*

Tham Saphong (Laos)

1 cm

H  
E  
X  
A  
P  
O  
D  
A  
-  
I  
N  
S  
E  
C  
T  
A



19478

1.0 mm

Bernard Lips

Coleoptera

Staphylinidae

*sp4*

Tham Saphong (Laos)

3 mm

H  
E  
X  
A  
P  
O  
D  
A  
-  
I  
N  
S  
E  
C  
T  
A



19071

Josiane Lips



Coleoptera

Staphylinidae

*sp4*

Tham Kway (Laos)

3 mm

H  
E  
X  
A  
P  
O  
D  
A  
-  
I  
N  
S  
E  
C  
T  
A



19477

0.5 mm

Josiane Lips

Coleoptera

Staphylinidae

*sp5*

Tham Saphong (Laos)

2 mm

H  
E  
X  
A  
P  
O  
D  
A  
-  
I  
N  
S  
E  
C  
T  
A



19479

0.5 mm

Bernard Lips



Coleoptera

Staphylinidae

*sp6*

Tham Khong (Laos)

12 mm

H  
E  
X  
A  
P  
O  
D  
A  
-  
I  
N  
S  
E  
C  
T  
A



19282\*

Josiane Lips

Coleoptera

Staphylinidae

*sp7*

Tham Kway (Laos)

3 mm

H  
E  
X  
A  
P  
O  
D  
A  
-  
I  
N  
S  
E  
C  
T  
A



19165

0.5 mm

Bernard Lips



Coleoptera

Staphylinidae

*sp8*

Tham Saphong (Laos)

2 mm

H  
E  
X  
A  
P  
O  
D  
A  
-  
I  
N  
S  
E  
C  
T  
A



19481

0.5 mm

Bernard Lips

Hymenoptera

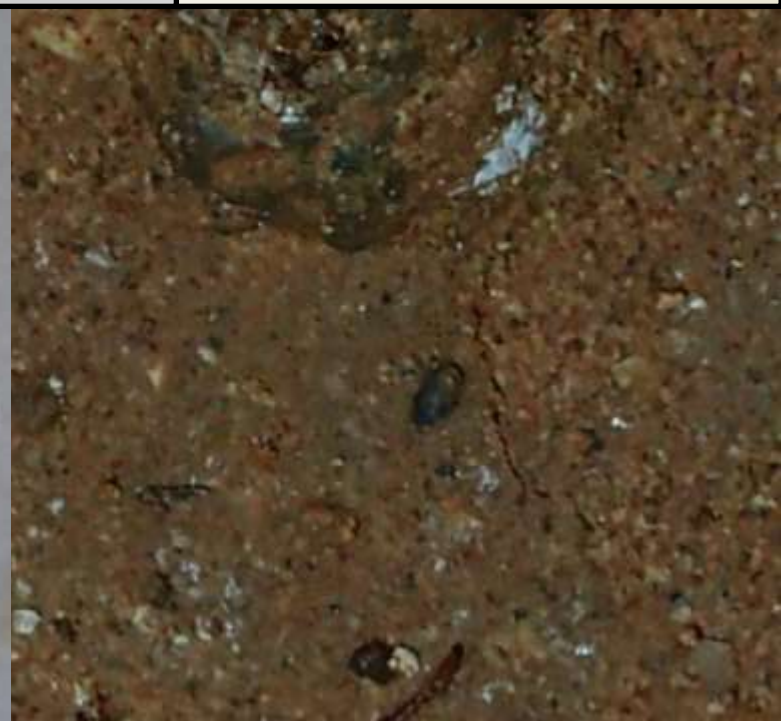
Formicidae

*sp1*

Tham Kway (Laos)

8 mm

H  
E  
X  
A  
P  
O  
D  
A  
-  
I  
N  
S  
E  
C  
T  
A



19161

Josiane Lips



Hymenoptera

Formicidae

sp2

Tham Khong (Laos)

12 mm

H  
E  
X  
A  
P  
O  
D  
A  
-  
I  
N  
S  
E  
C  
T  
A



19233

Josiane Lips



Hymenoptera

Formicidae

*sp3*

Tham Khong (Laos)

3 mm et 10 mm

H  
E  
X  
A  
P  
O  
D  
A  
-  
I  
N  
S  
E  
C  
T  
A



19246

Josiane Lips



Hymenoptera

Formicidae

sp3

Tham Khong (Laos)

3 mm et 10 mm

H  
E  
X  
A  
P  
O  
D  
A  
-  
I  
N  
S  
E  
C  
T  
A



19246

1.0 mm

Josiane Lips



Hymenoptera

Formicidae

*sp3*

Tham Khong (Laos)

1,5 cm

H  
E  
X  
A  
P  
O  
D  
A  
-  
I  
N  
S  
E  
C  
T  
A



19257

2.0 mm



Josiane Lips



Hymenoptera

Formicidae

*sp4*

Tham Hoi (Laos)

8 mm

H  
E  
X  
A  
P  
O  
D  
A  
-  
I  
N  
S  
E  
C  
T  
A



19338



1.0 mm

Josiane Lips



Hymenoptera

sp1

Tham Done (Laos)

3 mm

H  
E  
X  
A  
P  
O  
D  
A  
-  
I  
N  
S  
E  
C  
T  
A



19087

Josiane Lips



Hymenoptera

sp2

Tham Done (Laos)

1,5 cm

H  
E  
X  
A  
P  
O  
D  
A  
-  
I  
N  
S  
E  
C  
T  
A



19113

Josiane Lips

Hymenoptera

sp3

Tham Khong (Laos)

5 mm

H  
E  
X  
A  
P  
O  
D  
A  
-  
I  
N  
S  
E  
C  
T  
A



19387

1.0 mm

Josiane Lips



Lepidoptera

*sp1*

Tham Done (Laos)

1,5 cm

H  
E  
X  
A  
P  
O  
D  
A  
-  
I  
N  
S  
E  
C  
T  
A



19086\*

Josiane Lips



Lepidoptera

Tham Mi Hang(Laos)

2,5 cm

*sp2*

H  
E  
X  
A  
P  
O  
D  
A  
-  
I  
N  
S  
E  
C  
T  
A



19055\*

Josiane Lips



Lepidoptera

Tham Kway (Laos)

1 cm

*sp3*

H  
E  
X  
A  
P  
O  
D  
A  
-  
I  
N  
S  
E  
C  
T  
A



19171\*

Josiane Lips



Lepidoptera

Tham Kway (Laos)

3 cm

*sp4*

H  
E  
X  
A  
P  
O  
D  
A  
-  
I  
N  
S  
E  
C  
T  
A



19176\*

BernardLips



Lepidoptera

*sp5*

Tham Saphong (Laos)

7 mm

H  
E  
X  
A  
P  
O  
D  
A  
-  
I  
N  
S  
E  
C  
T  
A



19038

Josiane Lips

Lepidoptera

sp6

Tham Khong (Laos)

5 mm

H  
E  
X  
A  
P  
O  
D  
A  
-  
I  
N  
S  
E  
C  
T  
A



19277\*

Josiane Lips



Lepidoptera

sp7

Tham Saphong (Laos)

2 cm

H  
E  
X  
A  
P  
O  
D  
A  
-  
I  
N  
S  
E  
C  
T  
A



19041

Josiane Lips



Lepidoptera

Tham Khiewkoud (Laos)

1,5 cm

*sp8*

H  
E  
X  
A  
P  
O  
D  
A  
-  
I  
N  
S  
E  
C  
T  
A



19207\*

Josiane Lips



Lepidoptera

*sp9*

Tham Khiewkoud (Laos)

1,5 cm

H  
E  
X  
A  
P  
O  
D  
A  
-  
I  
N  
S  
E  
C  
T  
A



19194\*

Josiane Lips



Lepidoptera

Tineidae

*sp1*

Tham Khong (Laos)

4 mm

H  
E  
X  
A  
P  
O  
D  
A  
-  
I  
N  
S  
E  
C  
T  
A



19256

Josiane Lips



Lepidoptera

Tineidae

*sp2*

Tham Khong (Laos)

4 mm

H  
E  
X  
A  
P  
O  
D  
A  
-  
I  
N  
S  
E  
C  
T  
A



19290\*

Josiane Lips



Lepidoptera

Erebidae

*Erebus macrops*

Tham Kway (Laos)

5 cm

Josiane Lips

H  
E  
X  
A  
P  
O  
D  
A  
-  
I  
N  
S  
E  
C  
T  
A



19021\*

Josiane Lips



Diptera

Cecidomyiidae

*sp1*

Tham En (Laos)

1 mm

H  
E  
X  
A  
P  
O  
D  
A  
-  
I  
N  
S  
E  
C  
T  
A

19376

1.0 mm

Josiane Lips



Diptera

Cecidomyiidae

*sp1*

Tham Done (Laos)

1 mm

H  
E  
X  
A  
P  
O  
D  
A  
-  
I  
N  
S  
E  
C  
T  
A

19419

1.0 mm

Josiane Lips





Diptera

Culicidae

*sp1*

Tham Done (Laos)

3 mm

H  
E  
X  
A  
P  
O  
D  
A  
-  
I  
N  
S  
E  
C  
T  
A



19083

Diptera

Culicidae

*sp1*

Tham Khong (Laos)

4 mm

H  
E  
X  
A  
P  
O  
D  
A  
-  
I  
N  
S  
E  
C  
T  
A



19276

1.0 mm

Josiane Lips



Diptera

Culicidae

*sp1*

Tham Saphong (Laos)

4 mm

H  
E  
X  
A  
P  
O  
D  
A  
-  
I  
N  
S  
E  
C  
T  
A



19028

1.0 mm

Josiane Lips

Diptera

Culicidae

*sp1*

Tham Saphong (Laos)

8 mm

H  
E  
X  
A  
P  
O  
D  
A  
-  
I  
N  
S  
E  
C  
T  
A



19126

Josiane Lips



Diptera

Mycetophilidae

Larva (sp1)

Tham Kway (Laos)

2 cm

H  
E  
X  
A  
P  
O  
D  
A  
-  
I  
N  
S  
E  
C  
T  
A



19142

Josiane Lips



Diptera

Phoridae

Tham Kway (Laos)

2 mm

H  
E  
X  
A  
P  
O  
D  
A  
-  
I  
N  
S  
E  
C  
T  
A



Josiane Lips



Diptera

Phoridae

Tham Kway (Laos)

2 mm

H  
E  
X  
A  
P  
O  
D  
A  
-  
I  
N  
S  
E  
C  
T  
A



19143



Josiane Lips



Diptera

Psychodidae

*sp1*

Tham Kway (Laos)

2 mm

H  
E  
X  
A  
P  
O  
D  
A  
-  
I  
N  
S  
E  
C  
T  
A



19149

Josiane Lips



Diptera

Psychodidae

*sp2*

Tham Khong (Laos)

4 mm

H  
E  
X  
A  
P  
O  
D  
A  
-  
I  
N  
S  
E  
C  
T  
A



19252

Josiane Lips

Diptera

Psychodidae

*sp3*

Tham En (Laos)

4,5 mm

H  
E  
X  
A  
P  
O  
D  
A  
-  
I  
N  
S  
E  
C  
T  
A

19378

1.0 mm

Josiane Lips





Diptera

Sciaridae

*sp1*

Tham Khong (Laos)

2 mm

H  
E  
X  
A  
P  
O  
D  
A  
-  
I  
N  
S  
E  
C  
T  
A



19359

1.0 mm

Josiane Lips

Diptera

Tipulidae

*sp1*

Tham Khong (Laos)

1,5 cm

H  
E  
X  
A  
P  
O  
D  
A  
-  
I  
N  
S  
E  
C  
T  
A



19299

Josiane Lips



Diptera

Tipulidae

*sp2*

Tham Khong (Laos)

H  
E  
X  
A  
P  
O  
D  
A  
-  
I  
N  
S  
E  
C  
T  
A



19425

1.0 mm

Josiane Lips

Diptera

*sp1*

Tham Done (Laos)

4 mm

H  
E  
X  
A  
P  
O  
D  
A  
-  
I  
N  
S  
E  
C  
T  
A



19089\*

Josiane Lips



Diptera

*sp2*

Tham Done (Laos)

2 mm

H  
E  
X  
A  
P  
O  
D  
A  
-  
I  
N  
S  
E  
C  
T  
A



19418

1.0 mm

Josiane Lips

Diptera

*sp3*

Tham Done (Laos)

8 mm

H  
E  
X  
A  
P  
O  
D  
A  
-  
I  
N  
S  
E  
C  
T  
A



19111\*

Josiane Lips



Diptera

sp4

Tham Done (Laos)

3 mm

H  
E  
X  
A  
P  
O  
D  
A  
-  
I  
N  
S  
E  
C  
T  
A



19099

1.0 mm

Josiane Lips

Diptera

sp5

Tham Done (Laos)

4 mm

H  
E  
X  
A  
P  
O  
D  
A  
-  
I  
N  
S  
E  
C  
T  
A



19411

1.0 mm

Josiane Lips



Diptera

Tham Khong (Laos)

5 mm

*sp6*

H  
E  
X  
A  
P  
O  
D  
A  
-  
I  
N  
S  
E  
C  
T  
A



19385

1.0 mm

Josiane Lips



Diptera

Tham Khiewkoud (Laos)

6 mm

*sp7*

H  
E  
X  
A  
P  
O  
D  
A  
-  
I  
N  
S  
E  
C  
T  
A



19195\*

Josiane Lips



Diptera

*sp8*

Tham Khiewkoud (Laos)

7 mm

H  
E  
X  
A  
P  
O  
D  
A  
-  
I  
N  
S  
E  
C  
T  
A



19197



Josiane Lips

Diptera

Tham Khong (Laos)

7 mm

*sp9*

H  
E  
X  
A  
P  
O  
D  
A  
-  
I  
N  
S  
E  
C  
T  
A



19266



19266

Josiane Lips



Diptera

*sp10*

Tham Khiewkoud (Laos)

2 mm

H  
E  
X  
A  
P  
O  
D  
A  
-  
I  
N  
S  
E  
C  
T  
A



19206

Josiane Lips

Diptera

sp11

Tham Khong (Laos)

6 mm

H  
E  
X  
A  
P  
O  
D  
A  
-  
I  
N  
S  
E  
C  
T  
A



19227

1.0 mm



Josiane Lips



Diptera

sp12

Tham Khong (Laos)

6 mm

H  
E  
X  
A  
P  
O  
D  
A  
-  
I  
N  
S  
E  
C  
T  
A



19273



Josiane Lips



Diptera

sp13

Tham En (Laos)

3 mm

H  
E  
X  
A  
P  
O  
D  
A  
-  
I  
N  
S  
E  
C  
T  
A



19320

Josiane Lips



Diptera

sp14

Tham Done (Laos)

8 mm

H  
E  
X  
A  
P  
O  
D  
A  
-  
I  
N  
S  
E  
C  
T  
A



19090

Josiane Lips

Diptera

sp15

Tham Done (Laos)

2 mm

H  
E  
X  
A  
P  
O  
D  
A  
-  
I  
N  
S  
E  
C  
T  
A



19420

1.0 mm

Josiane Lips



Diptera

sp16

Tham Kway (Laos)

2 mm

H  
E  
X  
A  
P  
O  
D  
A  
-  
I  
N  
S  
E  
C  
T  
A



19443

1.0 mm

Josiane Lips

Diptera

sp17

Tham Hoi (Laos)

3 mm

H  
E  
X  
A  
P  
O  
D  
A  
-  
I  
N  
S  
E  
C  
T  
A



19322

Josiane Lips



Ephemeroptera

Tham Saphong (Laos)

4 mm

*sp1*

H  
E  
X  
A  
P  
O  
D  
A  
-  
I  
N  
S  
E  
C  
T  
A

19499

1.0 mm

Josiane Lips



Heteroptera

*sp1*

Tham Done (Laos)

2 mm

H  
E  
X  
A  
P  
O  
D  
A  
-  
I  
N  
S  
E  
C  
T  
A



19114

0.5 mm



Josiane Lips



Heteroptera

Reduviidae

sp2

Tham Saphong (Laos)

7 mm

H  
E  
X  
A  
P  
O  
D  
A  
-  
I  
N  
S  
E  
C  
T  
A



19031



Josiane Lips



Heteroptera

*sp3*

Tham Done (Laos)

6 mm

H  
E  
X  
A  
P  
O  
D  
A  
-  
I  
N  
S  
E  
C  
T  
A



19191\*

Jean-Michel Ostermann



Heteroptera

Reduviidae

*sp4*

Tham Khiewkoud (Laos)

12 mm

H  
E  
X  
A  
P  
O  
D  
A  
-  
I  
N  
S  
E  
C  
T  
A



19203

Josiane Lips

Heteroptera

Reduviidae

*sp5*

Tham Khong (Laos)

3 mm

H  
E  
X  
A  
P  
O  
D  
A  
-  
I  
N  
S  
E  
C  
T  
A



19284

Josiane Lips



Heteroptera

Reduviidae

*sp5*

Tham En (Laos)

5 mm

H  
E  
X  
A  
P  
O  
D  
A  
-  
I  
N  
S  
E  
C  
T  
A

1.0 mm



19304



Josiane Lips



Heteroptera

Reduviidae

*sp6*

Tham En (Laos)

4 mm

H  
E  
X  
A  
P  
O  
D  
A  
-  
I  
N  
S  
E  
C  
T  
A



19302

Josiane Lips



Heteroptera

Tingidae

*sp7*

Tham Saphong (Laos)

2 mm

H  
E  
X  
A  
P  
O  
D  
A  
-  
I  
N  
S  
E  
C  
T  
A



19500

1.0 mm



Josiane Lips

1.0 mm



Blattodea

Blaberidae

*sp1*

Tham Saphong (Laos)

5 cm

H  
E  
X  
A  
P  
O  
D  
A  
-  
I  
N  
S  
E  
C  
T  
A



19075

Bernard Lips



Blattodea

*sp2*

Tham Done (Laos)

1 cm

H  
E  
X  
A  
P  
O  
D  
A  
-  
I  
N  
S  
E  
C  
T  
A



19100

Josiane Lips



Blattodea

*sp3*

Tham Khong (Laos)

1,2 cm

H  
E  
X  
A  
P  
O  
D  
A  
-  
I  
N  
S  
E  
C  
T  
A



19238\*

Josiane Lips



Blattodea

*sp4*

Tham Khong (Laos)

3 cm

H  
E  
X  
A  
P  
O  
D  
A  
-  
I  
N  
S  
E  
C  
T  
A



19247\*

Josiane Lips



Blattodea

sp5

Tham En (Laos)

2 cm

H  
E  
X  
A  
P  
O  
D  
A  
-  
I  
N  
S  
E  
C  
T  
A



19308

Josiane Lips



Orthoptera

Rhaphidophoridae

*sp1*

Tham Done (Laos)

1,5 cm

H  
E  
X  
A  
P  
O  
D  
A  
-  
I  
N  
S  
E  
C  
T  
A



19082

Josiane Lips

Orthoptera

Rhaphidophoridae

*sp2*

Tham Saphong (Laos)

1,2 cm

H  
E  
X  
A  
P  
O  
D  
A  
-  
I  
N  
S  
E  
C  
T  
A



19067

Josiane Lips



Orthoptera

Rhaphidophoridae

*juvénile*

Tham Khong (Laos)

2 mm

H  
E  
X  
A  
P  
O  
D  
A  
-  
I  
N  
S  
E  
C  
T  
A



19248

Josiane Lips



Orthoptera

Tham Kway (Laos)

1,2 cm

*sp3*

H  
E  
X  
A  
P  
O  
D  
A  
-  
I  
N  
S  
E  
C  
T  
A



19180

Josiane Lips



Anura

Rhacophoridae

*Odorrana chloronota*

Tham Done (Laos)

2,5 cm

Josiane Lips

A  
M  
P  
H  
I  
B  
I  
A



19181\*

Aude Hourtal



Anura

Rhacophoridae

*sp1*

Tham Saphong (Laos)

3,5 cm

A  
M  
P  
H  
I  
B  
I  
A



19036\*

Josiane Lips



Anura

Rhacophoridae

*sp2*

Tham Done (Laos)

2,5 cm

A  
M  
P  
H  
I  
B  
I  
A



19092\*

Josiane Lips

Anura

sp2

Tham Khiewkoud (Laos)

2,5 cm

A  
M  
P  
H  
I  
B  
I  
A



19221\*

Josiane Lips



Anura

sp3

Tham Done (Laos)

5 cm

A  
M  
P  
H  
I  
B  
I  
A



19112\*

Josiane Lips



Aude Hourtal



Anura

sp3

Tham Kway (Laos)

4 cm

A  
M  
P  
H  
I  
B  
I  
A



19179\*

Bernard Lips



Anura

sp4

Tham Khiewkoud (Laos)

3 cm

A  
M  
P  
H  
I  
B  
I  
A



19226\*

Josiane Lips

Cypriniformes

*sp1*

Tham Done (Laos)

2 cm

A  
C  
T  
I  
N  
O  
P  
T  
E  
R  
Y  
G  
I  
I



19105

Josiane Lips



Cypriniformes

*sp2*

Tham Kway (Laos)

10 cm

A  
C  
T  
I  
N  
O  
P  
T  
E  
R  
Y  
G  
I  
I



19133

Josiane Lips

Siluriformes

Tham Kway (Laos)

10 cm

*sp1*

A  
C  
T  
I  
N  
O  
P  
T  
E  
R  
Y  
G  
I  
I



19427

Josiane Lips



Siluriformes

Tham Kway (Laos)

10 cm

*sp1*

A  
C  
T  
I  
N  
O  
P  
T  
E  
R  
Y  
G  
I  
I



19427

Aude Hourtal

Siluriformes

Tham Done (Laos)

6 cm

*sp2*

A  
C  
T  
I  
N  
O  
P  
T  
E  
R  
Y  
G  
I  
I

19109\*

Josiane Lips





Squamata

Gekkonidae

*sp1*

Tham Kway (Laos)

1 cm

R  
E  
P  
T  
I  
L  
I  
A



19188

Bernard Lips

Squamata

Viperidae

*Triceratolepidophis sieversorum*

Tham Khoun Huay (Laos)

40 cm

Josiane Lips

R  
E  
P  
T  
I  
L  
I  
A



19189

Jean-Michel Ostermann



Chiroptera

Rhinolophidae

Hou Inkeo (Laos)

M  
A  
M  
M  
A  
L  
I  
A



19553

Aude Hourtal



Primate

Xe Bang Fai (Laos)

10 cm

M  
A  
M  
M  
A  
L  
I  
A



19964

Jean-Michel Ostermann



Primate

Hou Inkeo (Laos)

10 cm

M  
A  
M  
M  
A  
L  
I  
A



19554

Aude Hourtal





19144

Josiane Lips



# Diaporama : Josiane Lips

